

Welcome to the Roseville Area Middle School community. Please use the list below to guide you through orientation.

✓Checks written tonight should be made out to RAMS and include a phone #.

#### STATION #1 – GYM LOBBY ENTRANCE

- ↓  Greet Administration, Pick-up open house information & a building map

#### STATION #2 – GYM LOBBY

- ↓  Raider Wear / Phy Ed uniform sales (in Gym Lobby) \$8 per t-shirt or \$15 for 2 t-shirts (optional)

#### STATION #3 – GYMNASIUM

- ↓  Student Photos (Purchase of photos is \*optional, but ALL students need a picture taken for records & yearbook)

#### STATION #4 – CAFETERIA

- ↓  Pick up your student's class schedule and ParentVue login guide

#### STATION #5 – ATHLETICS/ACTIVITIES OFFICE

- ↓  Questions about RAMS Activities/Athletics – stop by with questions about athletics and activities. More information is available in the Media Center for 7-12 sports.

#### STATION #6 – COMPUTER LAB 211

- ↓  Sign-up for ParentVue (\*Optional stop for families who have not already signed up)

#### STATION #7 – MEDIA CENTER

**(Please stop and purchase locks for all 7<sup>th</sup> grade students or new 8<sup>th</sup> grade students. Other items are \*optional):**

- Lock purchase

(All new students must purchase 2 Masterlocks from RAMS – one for your hall locker & one for your PE locker. Locks can be purchased in pairs, with both having the same combination. Cost is \$4.50 for new locks or \$1.00 for used locks. Returning 8<sup>th</sup> graders can use your locks from last year. Do not share your locker combination with another student.)

- \*Lunch / Breakfast accounts - Costs: Breakfast \$1.90 Lunch \$3.00 Milk \$.50

(School meal purchases will be done electronically. You will be given a PIN number that allows you to debit your pre-paid account. Each purchase will be recorded and subtracted from your balance. Keep your PIN secret. Money must be deposited in the main office before 10:00am to be credited to your account for lunch that day. You can deposit breakfast money right before eating. You can also deposit money into your student's account online. Students receiving free or reduced lunch will need to add money to their account to buy snacks).

- \*7-12 Athletic Programs Information

- \*Transportation / Bussing information

(Make sure you know your morning & afternoon school bus route number and pick-up/drop-off site. Morning & afternoon route numbers might be different. If you did not receive this information in the mail check here or call Jim Monroe at 651-635-1638).

#### STATION #8 – HEALTH OFFICE

- Turn in your health form, if you have not done so already. Students must be fully vaccinated to start school.

#### FINAL STEP – STAR CLASSROOMS and WALK YOUR SCHEDULE:

- Locker assignment from STAR Teacher – find your locker, practice your locker combination and leave your lock on your locker.
- Walk your class schedule / meet your teachers

**Please EXIT the BUILDING THROUGH DOOR 1 (by classrooms 247 and 249).**

7<sup>th</sup> Graders – see you on Tuesday, September 3<sup>rd</sup> for your First Day of School! – Report to your STAR class.

8<sup>th</sup> Graders – see you on Wednesday, September 4<sup>th</sup> for your First Day of School! – Report to your STAR class.



# WELCOME TO ROSEVILLE AREA MIDDLE SCHOOL

## CLASS SCHEDULE

Period 1	8:05-8:51am
Period 2	8:55-9:39am
Period 3	9:43-10:27am
STAR	10:31-10:56am

### 7<sup>th</sup> Grade Lunch Block

Period 4	10:56-11:26am (A lunch)
	11:26am-12:14pm Class
Period 4	11:00-11:22am Class
	11:22-11:52am (B lunch)
	11:52am-12:14pm Class
Period 5	12:18-1:02pm

### 8<sup>th</sup> Grade Lunch Block

Period 4	11:00-11:48am Class
	11:48am-12:18pm (C lunch)
Period 5	12:18-1:02pm
-----	
Period 5	11:52am-12:36pm Class
	12:36-1:06pm (D lunch)

Period 6	1:06-1:51pm
Period 7	1:55-2:40pm



## ParentVue

We look forward to partnering with you to help your student be successful. Synergy Parent Portal, ParentVue, is a tool to help families stay informed about their student's progress.

### ParentVue is a great way to:

- Monitor attendance
- Check grades
- View missing assignments
- Communicate with teachers

ParentVue provides the opportunity to opt in for automatic notifications via email of unexcused absences/tardies and student's class grades and missing assignments.

Teachers update grades at a minimum on the 15<sup>th</sup> and 30<sup>th</sup> of every month.

Want quick and easy access?

Get the free ParentVue app on your smartphone.

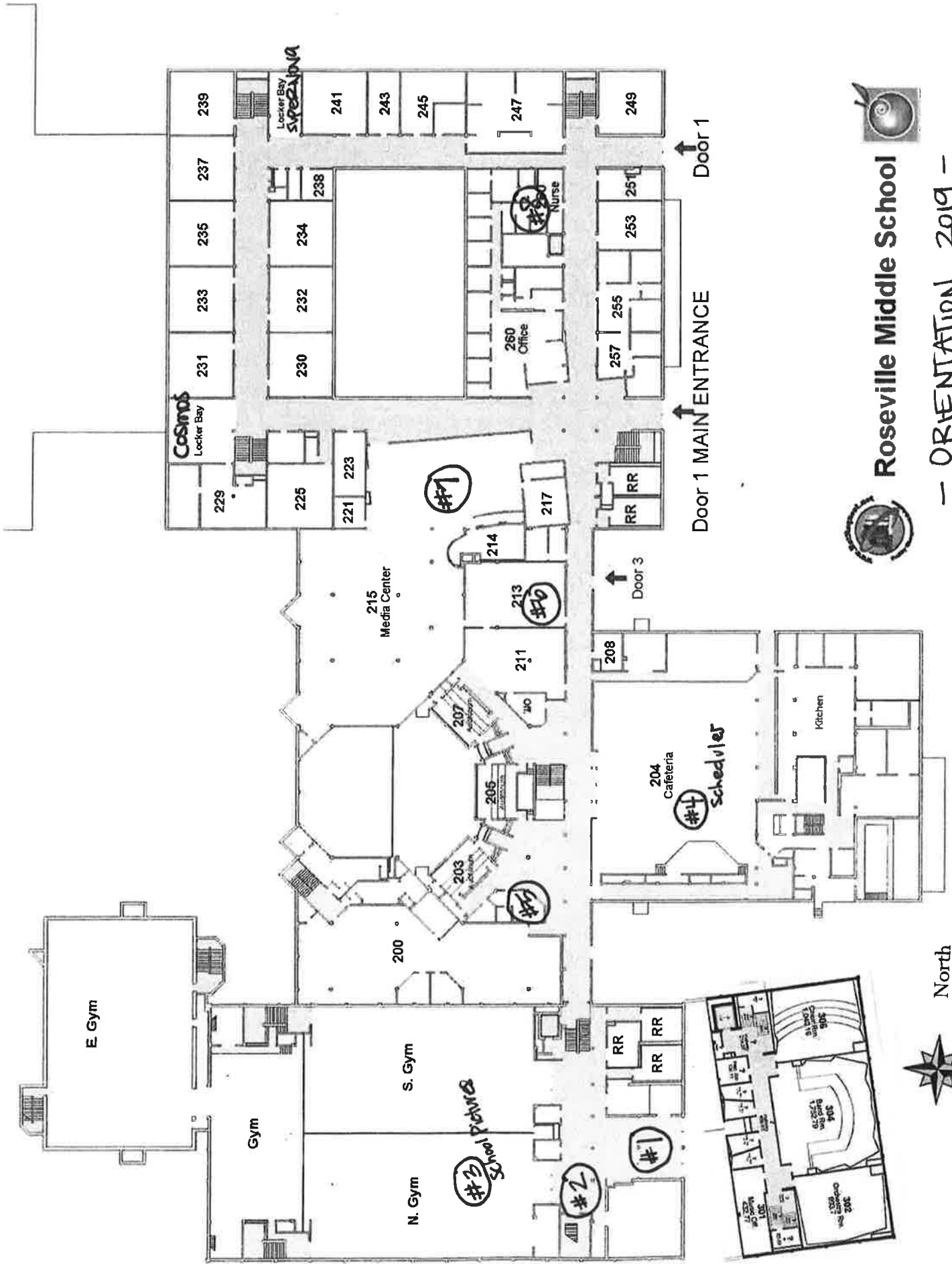


ParentVUE  
Edupoint Educ...  
No Ratings



### HOW TO USE MY LOCK

1. Turn the dial to the RIGHT 3 times  
→
2. Stop at the first number.
3. Turn the dial to the LEFT, ←  
passing the first number in your combination.
4. Stop at the second number.
5. Turn the dial to the RIGHT →  
and stop at the third number.



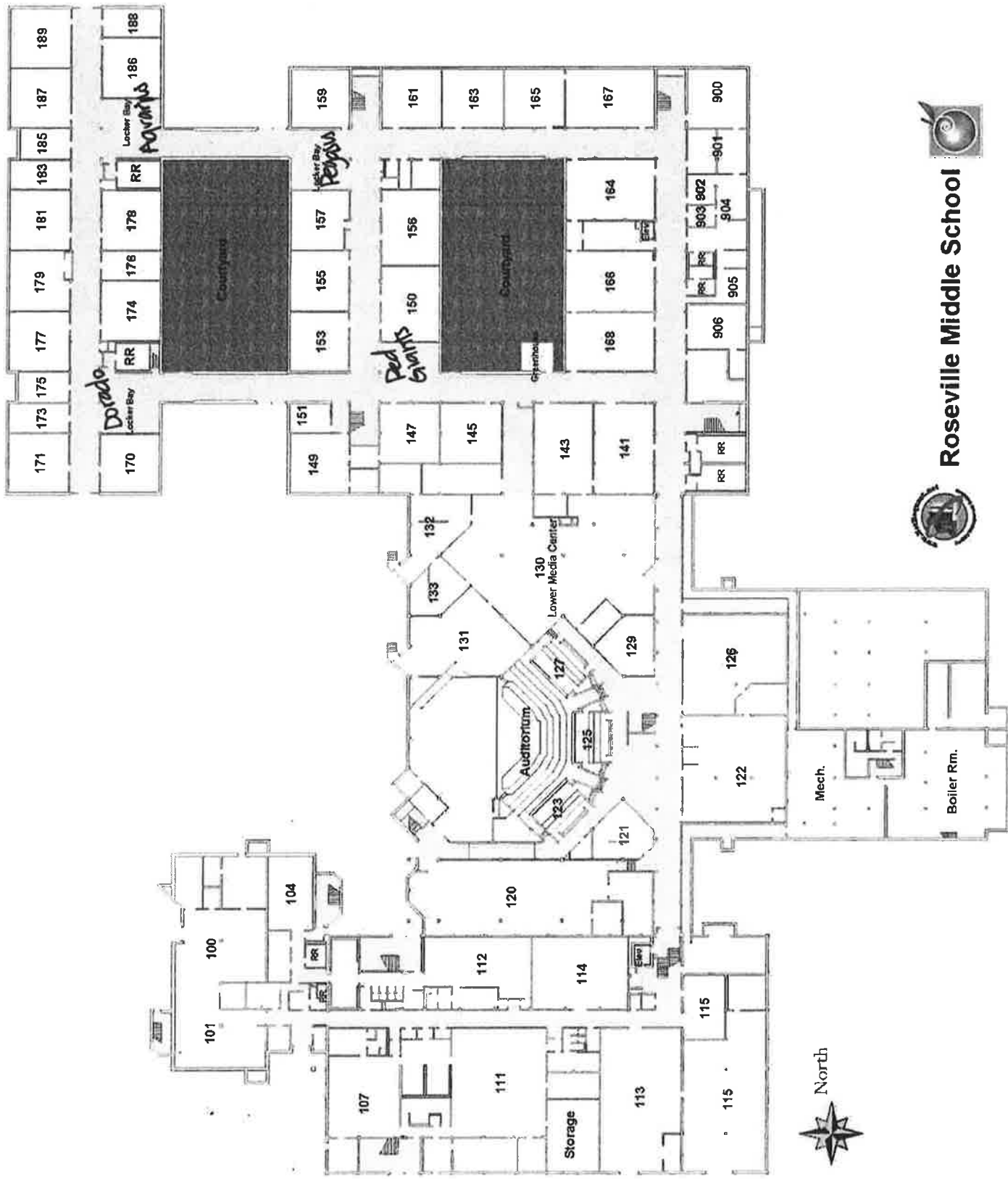
# Roseville Middle School



— ORIENTATION 2019 —



North



Roseville Middle School

