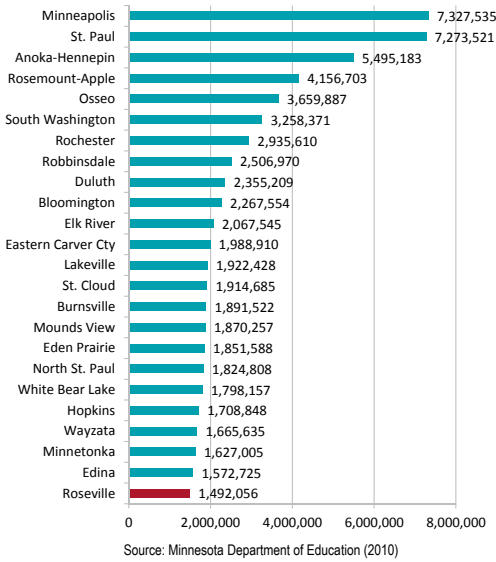


# Facilities

UPDATE

## To Our Community

**Ranking of 24 Largest MN Districts by Facility Square Footage**

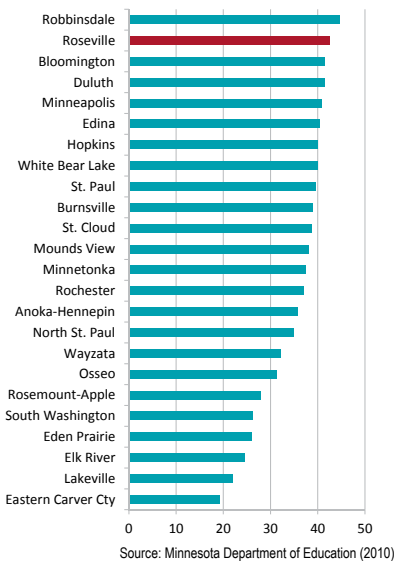


As a Roseville graduate myself, I understand this community’s connection to its school buildings. Schools are so much more than bricks and mortar. They represent important milestones and memories. They also often serve as community centers and gathering points. So when Roseville Area Schools made the decision to move forward with a major facilities review, we wanted to make sure our community understood the why, the how, and the what. Why are we conducting a district-wide facilities review? How is it being conducted and how can our community be involved? And what will happen as a result of this review?

At the root of our facilities review is the fact that the last major renovation to any district facility was completed more than 20 years ago as a result of the 1992 bond referendum. With the exception of Harambee Elementary School, every current building was built in the 1950s and 1960s and is now 50-60 years old at its core. We know it’s time to take a closer look at how our facilities are serving our students and our communities.

“We know that a successful facilities plan will directly reflect our community’s vision for the future.”

**Ranking of 24 Largest MN Districts by Average Facility Age**



During our research we’ve come upon some interesting facts. The top chart represents the 24 largest districts in the state ranked by square footage of existing facilities.

Roseville is the smallest. The bottom chart represents those same districts ranked by average age of all facilities. Roseville is the second oldest.

You will have many opportunities to learn more about our facilities review process and any decisions that will be made as a result. We also welcome your questions and involvement. Please see page 4 for how you can personally serve on the district’s Options Committee and be a constructive part of the conversation.

It is our sincere goal to not only engage you in the process but also keep you informed every step of the way. We know that a successful facilities plan will directly reflect our community’s vision for the future.

*Aldo*  
Aldo Sicoli  
Superintendent



**Roseville Area Schools**

*Quality Teaching & Learning for All... Equity in All We Do*

# Criteria Committee Work

Roseville Area Schools' long-range facilities planning process has been guided by the work of three community committees: the Physical Criteria Committee, the Educational Criteria Committee, and the Activities & Community Criteria Committee. The overarching goal of the committee work was to build consensus around the district's needs before developing any solutions. Each committee, which was comprised of community members, staff, and parents, met multiple times between September and November.

## PHYSICAL CRITERIA

- Physical Conditions
- Operations
- Quality
- Site Evaluation
- Technology Infrastructure
- \* Safety and Security

## EDUCATIONAL CRITERIA

- Enrollment
- Capacity
- Grade Configuration
- Educational Adequacy
- Technology for Instruction
- Programmatic Issues

## ACTIVITIES & COMMUNITY CRITERIA

- Athletics
- Performances
- Activities
- Community Use
- \* Partnerships

## CRITERIA COMMITTEE MEMBERS

### ACTIVITIES & COMMUNITY

Steve Allen (Parent)  
Pablo Armas-Escobar (Staff)  
Cyndi Arneson (Staff)  
Nay Moe Aung (Student)  
Steve Bennett (Parent)  
Dan Boerigter (Parent)  
Doreen Brookins (Parent)  
Robert Broxterman (Staff/Alumni Parent)  
Victor Castillon (Parent)  
Lisa Edstrom (Alumni Parent)  
Jason Etten (Parent)  
Rumi Fazier (Parent)  
Sara Florin (Parent)  
Troy Grundtner (Parent)  
Pam Harris (Community Member)  
Greg Haug (Parent)  
Gina Kristufek (Staff)  
Tom Krueger (Staff)  
Michelle Kruzal (Staff/Alumni Parent)  
Alex Montesino (Parent)  
Raquel Montesino (Parent)  
Lacey Nviri (Parent)  
Linsey Owen (Staff)  
Tyler Peterson (Parent)  
Mya Phuy (Staff)  
Kris Rossow (Staff)  
Ron Schneider (Staff/Parent)  
Kimberly Spitzfaden (Staff)  
Marlene Stillman (Staff)  
Pat Trudgeon (Community Member)  
Greg Ueland (Staff)  
Ayanna Washington (Student)

### EDUCATION

Tammy Allen (Staff/Parent)  
Hetal Ascher (Staff)  
Amy Bailey (Staff)  
Travis Birkliid (Staff)  
Leah Bourg (Staff)  
Kara Brehm (Staff)  
Teresa Chavez (Staff)  
Andy Collins (Alumni Parent)  
Carrie Dickson (Parent)  
Jennifer Duncan (Parent)  
Carol Ericson (Community Member)  
Ildephonse Gasongo (Parent)  
Lee Hunter (Student)  
Bridget Jacobson (Parent)  
Kayla Jain (Staff)  
Curtis Johnson (Parent)  
Terry Jones (Parent)  
Emily Kedrowski (Parent)  
Brad Kirscher (Parent)  
Miles Lawson (Staff)  
Jim Leslie (Former Staff)  
Amy Linabery (Parent)  
Martha Mason-Miller (Staff)  
Erin Roquemore (Parent)  
Kaying Thao (Parent)  
Kendra Tlusty (Staff)  
Zuki Vang (Student)  
Melissa Weber-Sanders (Parent)  
Amy Weigel (Staff)  
Andrew Woods (Parent)  
Huda Yusef (Parent)  
Sara Zimmerman-White (Staff/Member)

### PHYSICAL NEEDS

Rupee Adhikari (Student)  
Brad Anderson (Staff)  
John Bachhuber (Parent)  
Joseph Brown Thunder (Parent)  
Chrissy Christensen (Staff/Parent)  
Randy Covert (Business Community)  
Mitch Edwards (Staff)  
Phil Fisher (Community Member)  
Janet Henquinet (Alumni Parent)  
Roger Hess (Business/Alumni Parent)  
Brian Hoag (Staff)  
Ed Hodder (Parent)  
Susan Hoyt (Community Member)  
Martha Jacobson (Parent)  
James Kilborn (Alumni Parent)  
Jonathan Klinkenberg (Parent)  
Rao Konidena (Parent)  
Deb Legan (Staff)  
Kue Nay Mue (Student)  
Lisa Pallo (Staff/Parent)  
Wayne Powers (Staff)  
Bryan Ramos Rodas (Student)  
Pamela Renkel (Community Member)  
John Shardlow (Community Member)  
Leslie Studenski (Parent)  
Matt Sundeen (Parent)  
Lisa Tepley (Parent)  
John Thein (Alumni Parent)  
Stacy Werner (Staff)  
Nate Woodward (Parent)  
Joe Wozniak (Parent)  
Anna Zbacnik (Staff/Parent)

# Criteria Committee Outcomes

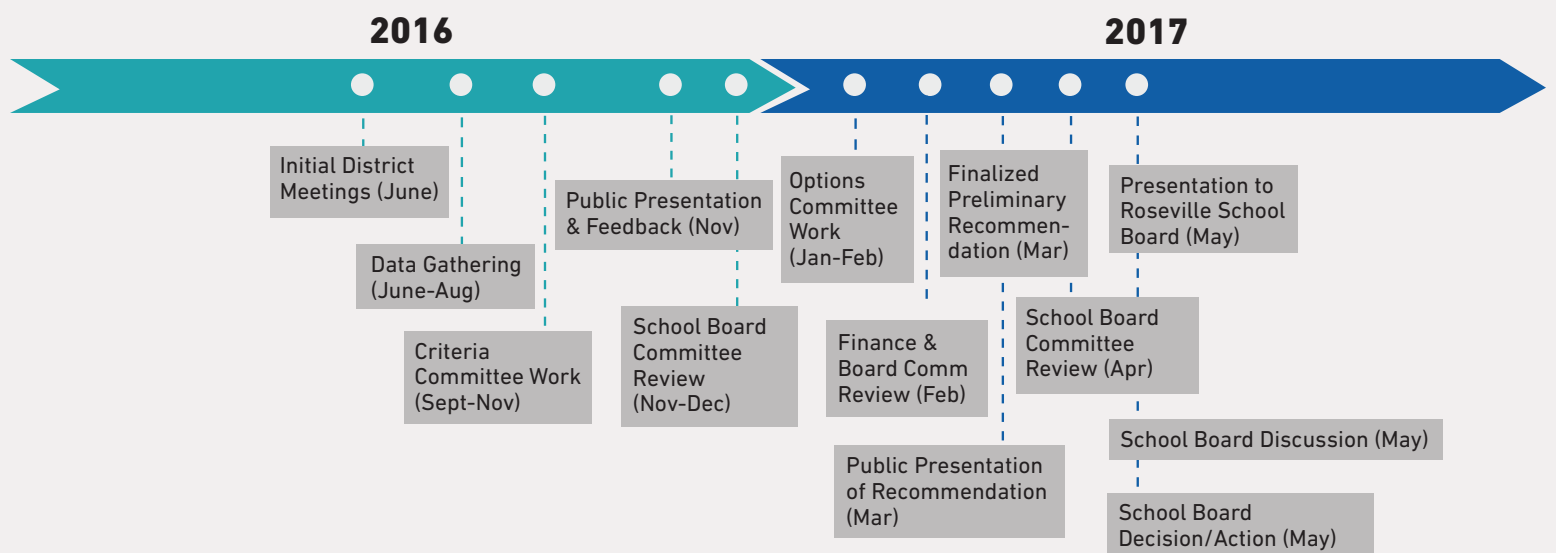
The following items represent the collective work of the three Criteria Committees. The committees were not charged with determining solutions or options; rather, they were responsible for identifying needs and determining what should be addressed now. It is important to note that this is not a final list nor does it represent all needs. The ultimate goal of the Criteria Committees was to identify and prioritize needs for the Options Committee to resolve.

- Safety and security should continue to be a high priority.
- All buildings need upgrades to ventilation and air conditioning.
- Enrollment projections will require additional space at the high school level.
- Grade structure of schools should remain as it exists today.
- Labs and specialty spaces (such as shops and tech areas) need to be renovated.
- All schools require spaces aligned with 21st century learning.
- A shortage of activity spaces like gyms, fields, and auditoriums needs to be addressed.
- We must maintain spaces that support Roseville Community Education and the broader community.

“ The overarching goal of the committee work was to build consensus around the district’s needs before developing any solutions. ”



## Long-Range Facilities Planning Timeline







Roseville Area Schools  
Independent School District 623  
1251 West County Road B2  
Roseville, MN 55113-3299



Roseville Area Schools

# Facilities

UPDATE

Read the latest news  
about the school  
district's facilities review  
and the results from  
recent committee work

## You Are Invited

### Options Committee Process

The Facilities Planning process is moving into the second phase. The next phase is the creation of an Options Committee, which will assist in the development of options to address the facility challenges identified by the Criteria Committees. (The Options Committee is not a facilities design committee. Design activities will take place at some time in the future if the decision is made to renovate any district facilities.)

We are seeking community members, staff members, and students who wish to participate on the Options Committee. In order to participate, you must be available to meet from 6 p.m. to 8 p.m. on the following dates:

- Wednesday, January 18
- Wednesday, February 1
- Wednesday, February 15
- Wednesday, March 1
- Wednesday, March 22

If you are interested in participating on the Options Committee, you can apply online at [isd623.org/facilities](http://isd623.org/facilities) or call 651.628.6452. Applications should be completed no later than January 6, 2017.