



Roseville Area Schools

Quality Teaching & Learning for All...Equity in All We Do

Board Update on Learning Models

Presented September 22, 2020

Determining the current model

There are a number of factors we will consider when determining if/when it is safe to transition to blended or in-person learning, including:

- The number of **positive COVID-19 cases** per 10,000 residents in Ramsey County.
- Consultation with local and state public health officials, and our health services staff on **the effects and transmissibility of COVID-19 on various age groups of students.**
- Observations on the health and safety experiences of **other local and national school re-openings.**
- Our **capability to adequately serve students** who choose Distance Learning Academy and blended learning models.
- **Feedback from families, staff and students** through our advisory committees, testimony to the board, and through other channels such as emails, surveys and phone calls.

Ramsey County

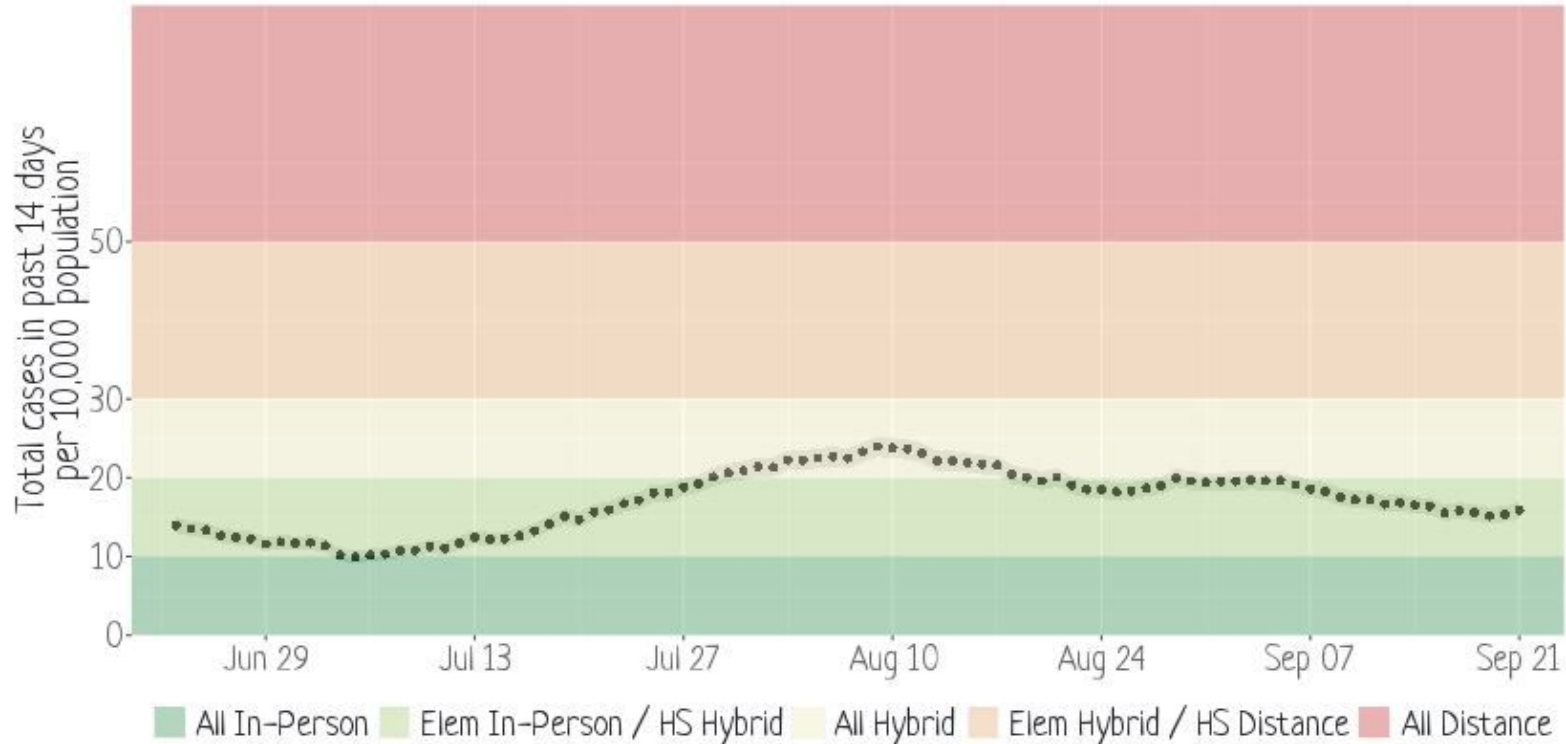
Population (2019 estimated): 550,321

As of September 21, 2020

14-day case rate per 10,000: 15.9

Guideline Status: Elem In-Person/HS

Hybrid

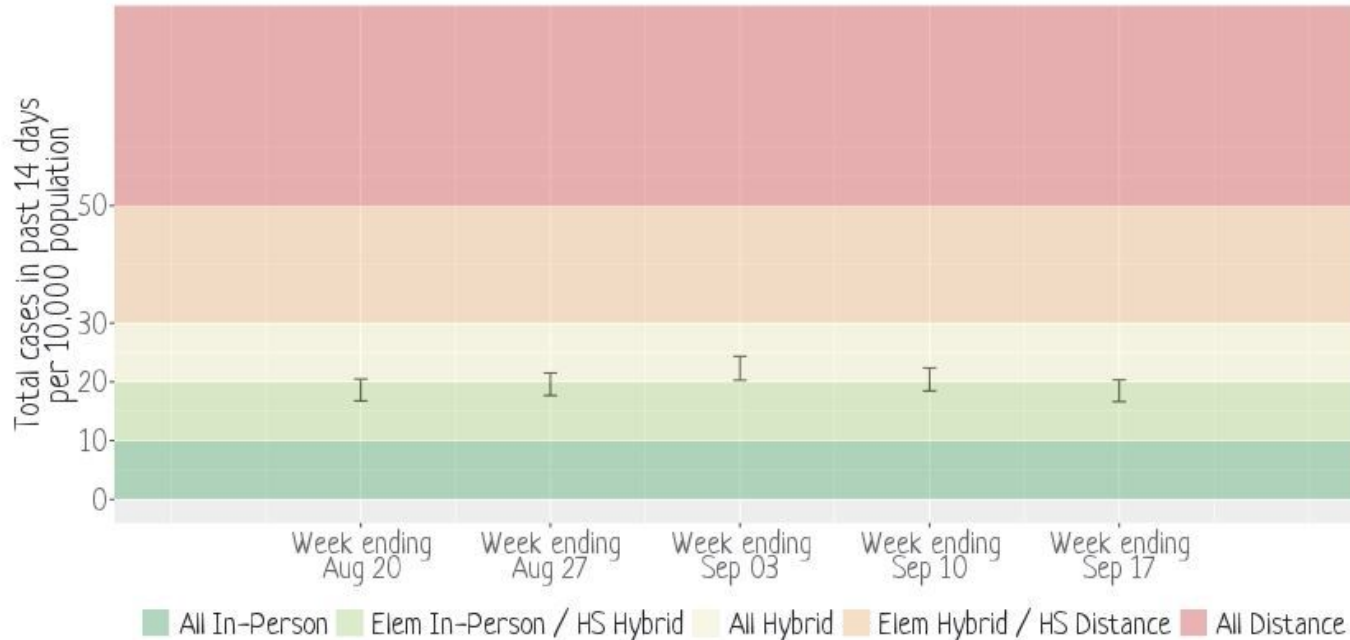


Roseville Area Schools

ZIP codes: 55108, 55109, 55112, 55113, 55117, 55126, 55127

As of September 17, 2020

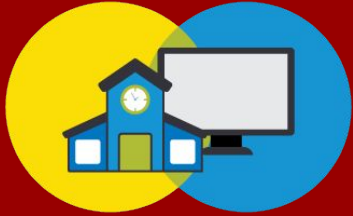
14-day case rate per 10,000: 18.5



Inner (thick) bar gives the range of 14-day per 10,000 case totals that are consistent with reported case data (MDH does not report exact case numbers in ZIP codes with ≤ 5 cases). Outer bars give 95% confidence intervals for this range. For larger school districts where no ZIP codes have ≤ 5 cases, only the outer bars are visible.

Options

Blended learning



or

Distance Learning
Academy

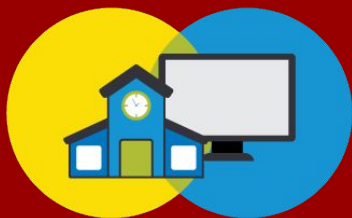


Our **blended learning model** addresses the need to get students back in school in a safe environment, balancing safety and in-person learning.

Some district families may prefer a full-time distance learning option for the entire 2020 – 2021 school year.

That is why we created the **Roseville Area Schools Distance Learning Academy** as our 100% distance learning option for families.

Blended learning



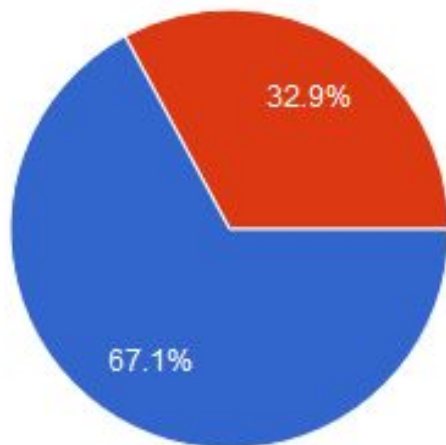
Options

Distance Learning Academy



Which learning option do I choose for my student?

2,941 responses



- Blended learning (a mix of in-person learning with social distancing and learning activities from home)
- Distance Learning Academy (100% learning from home).

As of 11:30 a.m. September 22, 2020

Tentative timeline for transition to blended learning and Distance Learning Academy

If health and safety conditions are favorable and it is safe to begin transitioning to blended learning, these are tentative dates for different grade levels to return:

- October 12 - Kindergarten, grade 1
- October 26 - ECSE, pre-K, grades 2 – 3
- November 9 - Grades 4 – 6
- December 7 - Grades 7 – 12



Synchronous vs. asynchronous

What do asynchronous and synchronous mean?!



Asynchronous learning - When a teacher and student are in different places and at different times. Students complete their work any time of the day that works best for a student and their family.



Synchronous learning - When a teacher and a student are online at the same time. Students must be online when the teacher has scheduled the meeting. Students have the opportunity to engage with their teachers, participate in group chats, view web-based lessons, and have video meet-ups with teachers and their classmates.

Blended Classroom

- Students attend school in-person two days per week (grades 2-6) or four days per week (kindergarten and first grade). Some students with special education needs may attend more often based on individual learning needs. Pre-K schedules will be determined by a student's registration, and ECSE based on a student's individualized education program.
- Classrooms limited to 50% capacity with social distancing.
- Students separated by six feet with face coverings (with limited specific exceptions), and schedules modified for handwashing, recess, lunch and specialists.
- On days students are not learning in-person at school, they will have asynchronous activities to do from home.
- Special education and English language development services will continue to be provided to qualifying students.

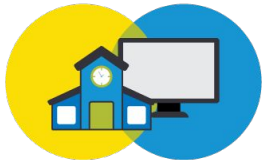


Elementary

Instruction & Curriculum - Blended Learning

- Students will have live in-person learning at least two days a week. Three days a week students will have asynchronous lessons.
- For asynchronous days, students are provided with learning opportunities such as video tutorials and independent activities. Asynchronous lessons will include short instructional videos (7 – 10 minutes) of specific learning targets.
- On the asynchronous days some specialist classes like physical education, art and music may be modified in order to create virtual learning opportunities.

Instruction will consist of a combination of in-person and asynchronous activities.



Elementary

Distance Learning Academy Classroom

Students participating in the **Distance Learning Academy** will:

- Be assigned a classroom teacher and receive instruction 100% online.
- Have a combination of synchronous and asynchronous activities.
- Have live sessions with teachers and online work to complete.

Distance Learning Academy students will be grouped into either grade level or multigrade classrooms at their home school.

ECSE students in the Distance Learning Academy will be placed with other students in the program.

Special education and English language development services will continue to be provided to qualifying students.



Elementary/ECSE

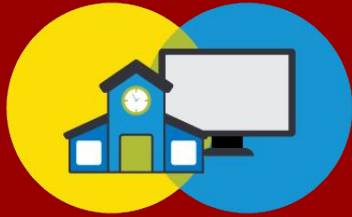
Instruction & Curriculum - Distance Learning Academy

- Students provided with learning opportunities through a blend of daily live virtual lessons, video tutorials and independent activities.
- Teachers will have scheduled time available for students to connect with questions. Asynchronous lessons will include short instructional videos (7-10 minutes) of specific learning targets.
- Some specialist classes like physical education, art and music may be modified in order to create virtual learning opportunities.

Instruction will consist of a combination of synchronous and asynchronous activities.



Elementary



More info

See our blended learning and Distance Learning Academy handbooks for more information about the learning models, including example schedules:

- Elementary Blended Learning Handbook
 - bit.ly/BLElementaryHandbook
- Elementary Distance Learning Academy Handbook
 - bit.ly/DLAElementaryHandbook



Roseville Area Schools

*Quality Teaching & Learning for All
...Equity in All We Do*

isd623.org/reopening